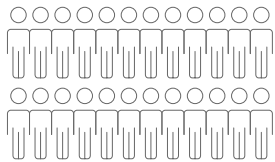




# UL SOFTLINE STATS

ARKANSAS FACILITIES



**SOFTLINES  
EMPLOYEES**

**450**

**AVERAGE  
RESOLUTION  
TIME FOR  
SALESFORCE  
CASES**  
(customer inquiries)

**1.6 DAYS**

**AVERAGE  
TURN-TIME  
FOR ALL AR  
SOFTLINES  
REPORTS**



**3.0 DAYS**

**PULL TURN-  
AROUND TIME  
GOAL OF**



## COLOR MATCHING

**COLOR PROGRAMS CAN HELP  
REDUCE THE FAILURE RATE  
TO SIGNIFICANTLY BELOW  
THE INDUSTRY STANDARD**

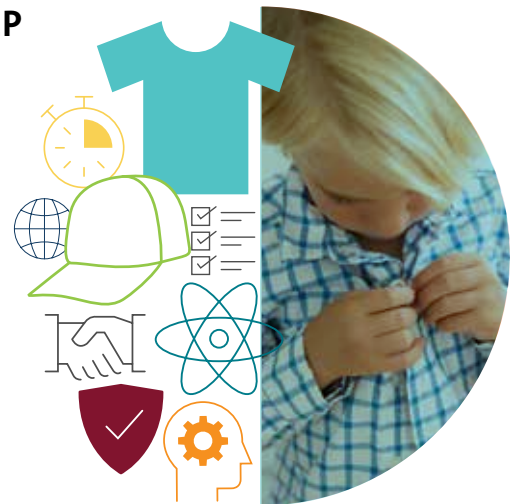
**TURN-TIME: 24 HOURS**

### **INDUSTRY STANDARD**

FOR LAB DIP FAILURES RANGE FROM 35-50%  
& FOR SHADE BANDS RANGE FROM 15-20%

### **WORKING WITH CTL'S COLOR MANAGEMENT**

PROFESSIONALS & TOOLS, SUPPLIERS CAN REDUCE THEIR  
FAILURE RATE SIGNIFICANTLY BELOW THE INDUSTRY AVERAGE



### **EVALUATING THE QUALITY & SAFETY OF:**

- ACCESSORIES
- ADULT CLOTHING
- FOOTWEAR
- CHILDREN'S CLOTHING
- HOME TEXTILES
- LEATHER GOODS

### **SAMPLE RETRIEVAL**

- 23 PULLERS
- 48 RETRIEVAL TIME
- 188+ RETAIL STORES
- 22 STATES COVERED

